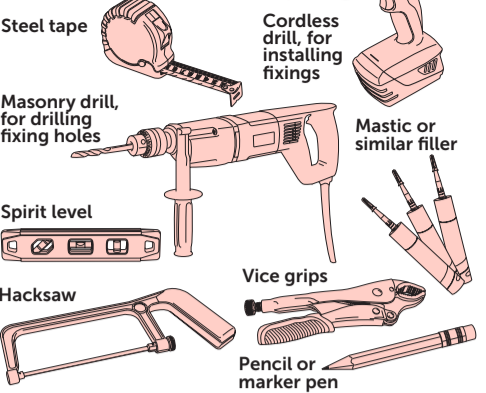
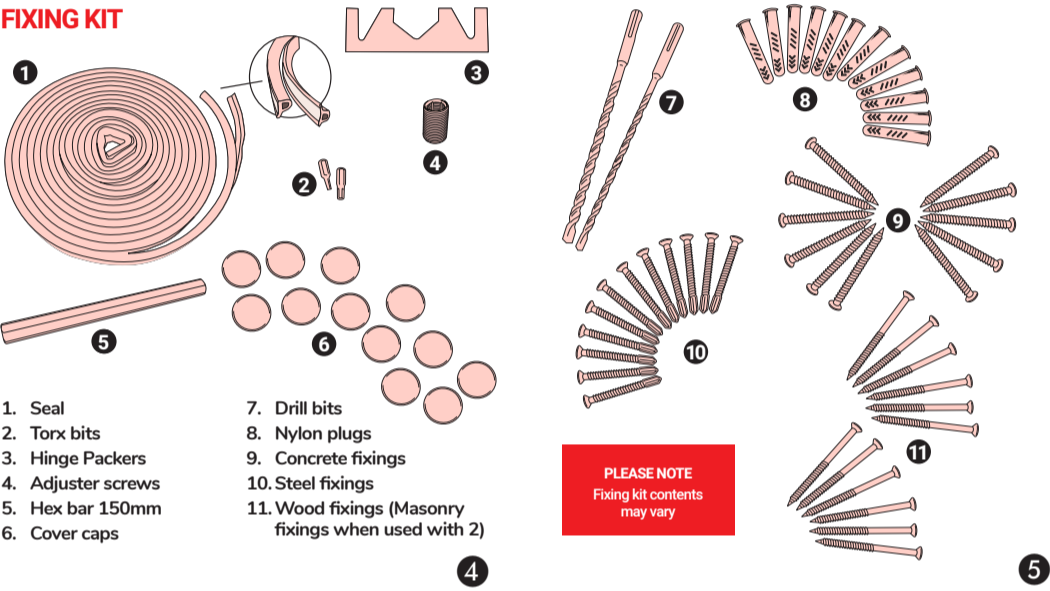


EQUIPMENT / TOOLS REQUIRED



- PRE-INSTALLATION CHECKS**
- ☐ Check the package content is not damaged.
 - ☐ The door frame supplied fits into the opening.
 - ☐ The area is cleared of all obstructions.
 - ☐ Package is complete (Check contents against the delivery note).
 - ☐ Check it is safe to drill around the opening (electrical cables, gas pipes etc).
 - ☐ The work area should be free from debris and the operator should beware of obstructions.
 - ☐ All necessary tools in place.
 - ☐ The tools are fully functional and there are no signs of damage.
 - ☐ All door hardware is in place.

FIXING KIT



DEFINITIONS OF SAFETY GUIDELINES

Please read the manual and pay attention to the following symbols:

WARNING - Potentially hazardous situation. If not avoided, could result in serious injury.

SUGGESTION Manufacturers advice

IMPORTANT Pay attention to details

DANGER - Potentially hazardous situation. If not avoided, could result in serious injury or even in death.

OTHER DEFINITIONS

The term “power tool” in this manual refers to your mains-operated (corded) power tool or battery-operated (cordless) power tool.

GENERAL SAFETY

For advice on the safety and suitability of this product contact the manufacturer.

Never fit the door-sets until you have fully read and understood instructions laid down in this guide and the work place has been properly set up using the information it contains.

WARNING - There is a serious risk of personal injury if you do not follow all instructions.

Fitting these products should be done by a competent person who has read and understood these instructions. Anyone with either a temporary or permanent disability, should seek expert advice before commencing work.

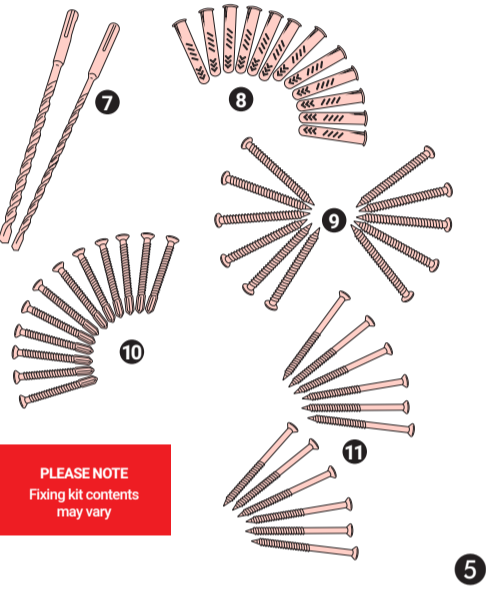
Keep children, animals and bystanders away from the work area.

When using power tools do not operate them in explosive atmospheres, such as in the presence of flammable liquids, gases or dust. Power tools create sparks which may ignite the dust or fumes.

Power tools may be used only in a dry environment.

TROUBLESHOOTING

Problem	Possible fix
Door hitting on strike jamb or adjacent door if double	Refer to Door Frame Installation Advice.
Door leaning down away from hinge	Check that the jamb is straight and adjuster screws in the middle are not overtightened.
Door not touching top or bottom of strike jamb	Adjust strike or hinge jamb.
Double Door Set appears twisted when meeting in the middle	Adjust hinge jambs.
Door (when operating) is catching the threshold	Use hinge packers as required (3 supplied in a single door set and 6 in a double) See fixing kit.
P seal comes off when operating door	Refer to page 13.
Exit hardware latch not locating	Check latch keep plate is installed.
Exit hardware not locking	Check shoot bolt adjustment.
Exit hardware double door set latch plate missing	The same latch is used for a single / double door-set. On a double door-set the latch plate overhangs the edge of the inactive leaf.
Keys missing	Keys on a single door are cable tied to a frame jamb, double door set they are in the installation box.
Gap between threshold and bottom of door leaf	Check that the threshold is supported along its length.
Cylinder not operating correctly	Loosen securing screw in face plate of lock, insert key and slowly operate the cylinder. Once operating correctly tighten securing screw.
Personnel door not latching correctly	File latch keep.



PLEASE NOTE
Fixing kit contents may vary

GETTING STARTED

SUGGESTION - Please check structural opening and door size are correct prior to beginning any work.

IMPORTANT - Transport damage or any other queries regarding the door set must be reported prior to installation.

The single door package is supplied assembled, this includes the threshold being fitted to the frame and the door being hinged.

Only the side expanders come separated. The double door package however comes completely disassembled. Before mounting the single frame, remove the door. Do not try to fit the frame with door hinged as you may damage the components.

SUGGESTION - Before laying the components down on the ground, protect them against damages and scratches.

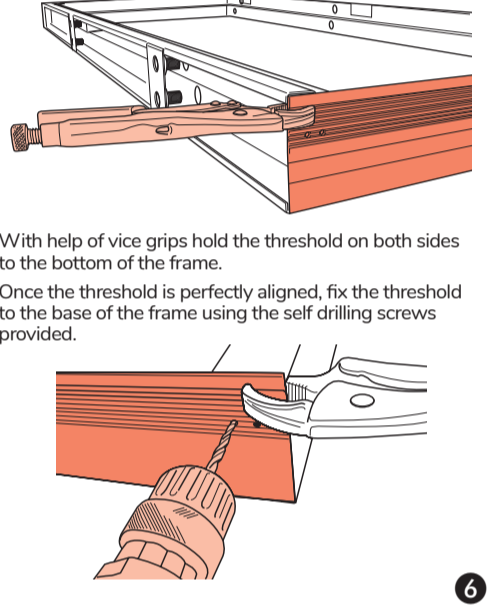
FITTING THE THRESHOLD

Thresholds are installed on single door sets prior to delivery, only double door sets require thresholds to be installed on site.

Thresholds must be fitted directly to the frame before the frame installation.

Lay down the frame on the flat surface.

Make sure the threshold is the same size as the width of the frame (measure from outer edges).



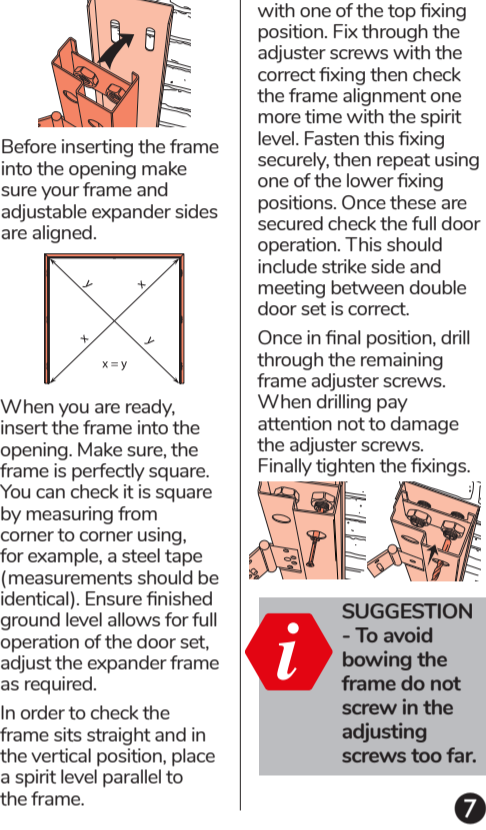
DOOR FRAME INSTALLATION

SUGGESTION - It is recommended, that at least 2 people fit the frame.

Before fitting the frame make sure you have everything necessary and you are well prepared to make your work faultless.

The door set comes with fully adjustable expander sides. These take up the distance between the structure and the door frame ensuring a perfect fit with the minimal use of sealant, even if the structure is uneven. Each expander side can take up to 12mm on each side. The expander side fits over the side jamb (as shown in the picture) and it moves towards the structure when using the adjuster screws fitted in the frame.

perfectly square, start screwing the adjusters through the frame holes, so that the frame is secure in the opening. The adjuster screws are turned using the hex bar supplied in the fixing kit. When screwing the adjusters clockwise, the expander side will move



FIRE RATED DOORS

Permissible Structures- Insulated & Uninsulated

a) Reinforced concrete walls, with a density of at least 2200 kg/m3 and a thickness of at least 100 mm.

b) Blockwork, masonry, or homogenous concrete wall with an overall density at least 850 kg/m3 having a thickness of a least 100 mm.

c) Aerated concrete block wall with an overall density at least 650 kg/m3 having a thickness of a least 100 mm.

For blockwork (incorporating aerated concrete) or masonry wall supporting constructions given in b) and c) the individual masonry units shall be bonded together with a mortar appropriate for the expected fire resistance period.

d) Uninsulated only - Flexible supporting construction as described in paragraph 7.2.2.4. of standard EN 1363-1:2020, of which the fire performance duration is at least equal to those of the doors.

The doors should be installed to the national and local Building Control and Fire Regulations.

When provided, all intumescent seals and fixing points are to be installed to comply with fire regulations. Any omitting of a fixing or replacing it with one not approved will invalidate the fire rating of the door set.

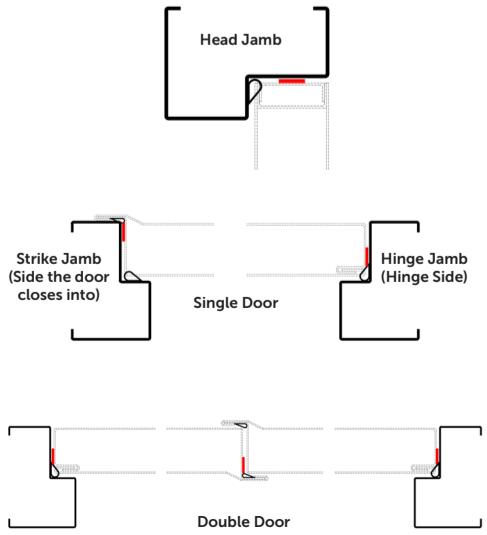
Clearance measurements between leaf and frame is 3mm +/- 1mm. The undercut between the bottom of the door and the finished floor level should be below 12mm.

Any small gaps between frame and structure should be taken up with the (fire mate) mastic sealant and should be fire rated and installed to EN1366-4 regulations.

FIRE DOOR SEAL INSTALLATION

For fire doors, installation of the seals must be installed on the door leaf in the following positions:

- Intumescent seal

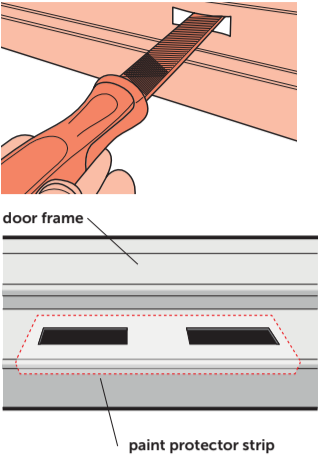


Any problems?

Call us - 01524 727000
www.justvaluedoors.co.uk

FILING THE LOCK KEEP

If the door is a personnel door-set, the latch keep will require the radius filing, once the latch keep is working correctly install the paint protector.



WARNING - There is a serious risk of personal injury if you do not follow all instructions.

FITTING DOOR TO THE FRAME

SUGGESTION - Fitting the door to the frame requires at least two people.

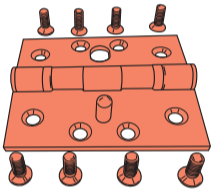
Once the frame is square and level, check that the door fits the frame. The door should have the hinges already fitted, but if not fit them.

Now hold the door up to the frame - at right angles to the frame (as if it's opened). Make sure the door is at the right height. At this stage using one fixing fit the top hinge to the frame first and then the bottom hinge.

Check operation of the door leaf.

Adjust the adjusting screws in the frame as required. When all the adjustments have been made secure the opposite side.

When everything is fitted, the door can be mounted. As explained, mount the door from the top hinge to the bottom. Use complete set of fixings.



IMPORTANT - When installing a double door set always check that the door leaves meet in the middle, ensure all gap tolerances are parallel and door leaves operate correctly.

FITTING DOOR HARDWARE

ARM CLOSURE

When the door sits firmly in the frame you can start fitting the closer arm.

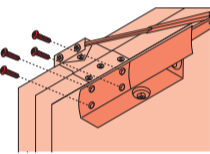
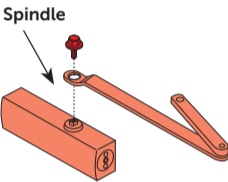
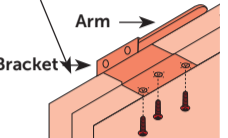
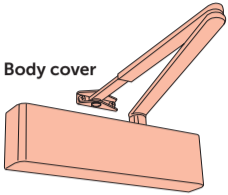
Attach arm to spindle with screw. Using a wrench on the square shaft on bottom of closer, rotate shaft approx. 45o toward hinge edge of door.

Hold and place main arm on shaft on top of closer. Tighten arm screw with lock-washer securely.

When body is ready you can attach it to the door. Position body with arm attached over drilled holes on the door. Once fixed slide the latch.

The last step is to connect main arm to the frame arm. Make sure you tighten it securely. At the end fitting replace the cap at the bottom of the closer and replace the cover on the body.

For best practice please follow the manufacturer's manual.



SUGGESTION - Where applicable, the "Push to Open" sign should be applied on the inside face of the door immediately above the operating element.

PANIC HARDWARE KEEPS

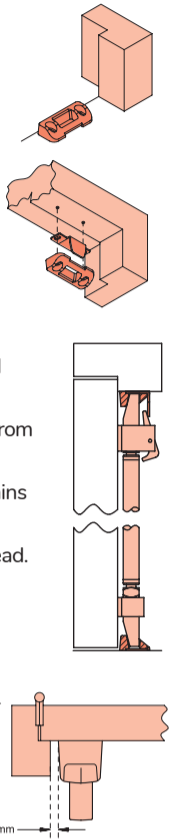
Prepare head and threshold for respective keepers.

Ensure that back edges of top and bottom keepers are in line with rebate stop.

Pull door into closed position and ensure:

- a) that top tripper releases against keeper plate.
- b) that both shoots throw fully and enter their respective keepers correctly.
- c) that shoots do not foul floor or head. Re-adjust if necessary.
- d) Threshold requires drilling for bottom keep location.

Fit end box on hanging stile of door ensuring that it is vertical and level with bolt box. Keep approximately 10mm distance from the frame.



IMPORTANT - The exit hardware may vary. For the best installation practice please use manufacturer's manual.

SUGGESTION - Doors that are used up to 40 times a day are serviced at 2 monthly intervals. Doors that are used more than 40 times a day should be checked every 2 weeks.

MICO MODULA LOCKSET SNIB ADJUSTMENT

Once the Mico lockset is installed, the snib will need adjusting to suit the door.

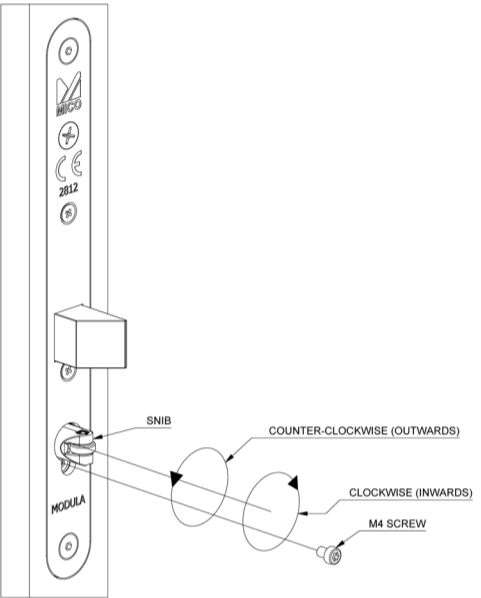
Remove M4 screw from the underside of the snib (shown on the image below).

Turn the snib clockwise until it does not strike with the receiver.

Turn the snib counter-clockwise in half-turn intervals until the snib has consistent contact with the receiver and activates when the door is closed.

Ensure handle returns to the horizontal position upon door closure.

Once the snib has been set, insert and secure M4 screw back into position, underneath the snib.



TOUCHING UP THE PAINTWORK

We supply a paint touch up system as part of the standard fixing kit. You can use it to cover paintwork scratches and chips, or for sealing the edges of a trimmed side expander frame. the powder supplied is an exact colour match to the door.



1. Remove the small powder coating pot from the top of the touch up stick.



2. Open it and combine the powder with the colourless base coat



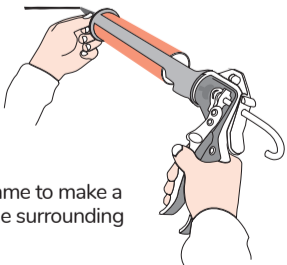
3. Shake well.



4. Apply as required.

APPLYING THE SEAL

Using masking tape to protect the door-frame and brickwork, use mastic to seal round the edges of the door frame to make a water tight bond with the surrounding surface.

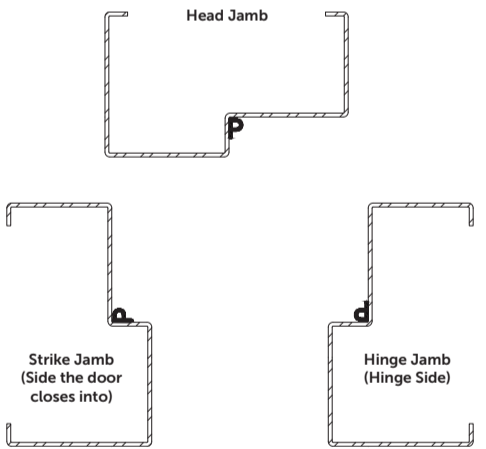


NOTE - For Secured by Design installataions - the joints between the head jamb and the side jambs must be sealed with a suitable, weatherproof silicone sealant.

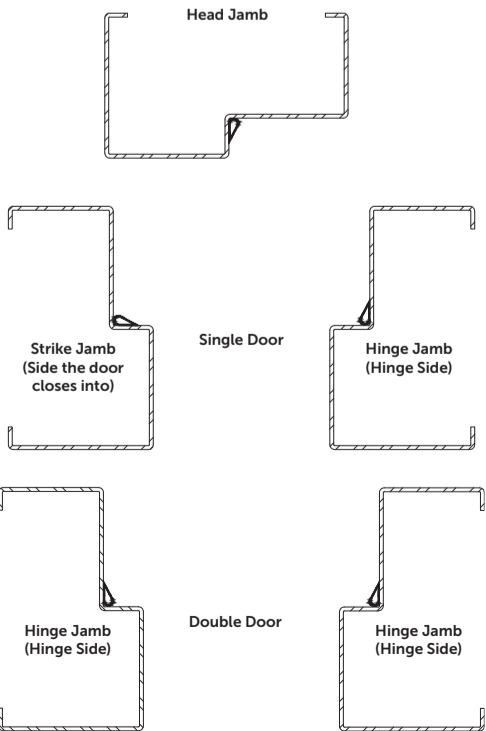
DOOR SEAL INSTALLATION

For all frame types installation of the seals must be installed in the following directions:

P SEAL



TEAR DROP SEAL



OPERATION AND MAINTENANCE

TO OPEN

Insert key (where applicable) and turn the key to retract the latch. Then retract the lever handles. Push bar or plate on exit hardware to release latch or bolt or any other hardware fitted to the door.

TO CLOSE

The door will close by either pulling the pull handle - retracting the lever handle or operating the panic furniture. The door leaf will latch into the receiving fixtures in the door-frame. Only use the hardware fitted to the door-set to open or close the door.

SUGGESTION - Encourage personnel to report any damage noticed during day-to-day usage, however minor it may seem, a prompt repair action can greatly prolong the useful life of the door.

Ensure the opening is free of obstruction at all times before closing the door. Do not leave external doors open in windy conditions.

MAINTENANCE INFORMATION

Maintenance periods should be determined according to operating sensitivity and local conditions to which the door is exposed.

Items to be checked during service (where applicable):

- Hinges,
- Latch operation,
- Lever handles,
- Pull handles,
- Thresholds and door seals,
- Furniture fitted onto door.

In common with all mechanical equipment these doors require regular maintenance to guarantee trouble free operation and avoid costly repairs due to damage.

CLEANING INFORMATION

Before carrying out any cleaning or maintenance work any electrical supply must be switched off. Doors should be kept clean and free from accumulating dirt. This should be done using warm water with a mild cleaning detergent. Clean cloths should be used at all times to avoid scratching to the painted finish. Do not use any chemical solvents, bleach as they may affect the finish.

WARRANTIES

The doors are guaranteed for 1 year under normal conditions of use and all hardware will come with manufacturers standard warranty. Free issue hardware is excluded from all warranties.

RE-ORDER INFORMATION

In the case of any faults or replacement parts required please contact the supplier. No spare parts are required to be carried by the customer.

IMPORTANT - Failure to comply with the manual will void all warranties any damage to the door-set will void all warranties

As a supplier of quality, British made bespoke steel doors but is not responsible for installation of our products. The warranty we give and commitments we make as to the quality and any certification associated with our products are conditional on our products being correctly and properly installed with all specified fixings and components using any tools indicated.

As per our Terms and Conditions of Sale, we shall have no liability for any product quality issues caused by incorrect installation and the warranty and manufacturer's guarantee will be invalidated by any failure to install the Products correctly.

To assist our customers in installing our steel door products or arranging for installation, we have issued these general installation and maintenance instructions. Please note that methods of installation may vary from site to site and the recommendations we make in these instructions do not constitute advice. We recommend that you only install the products if you are appropriately experienced and competent.

Please consult our Terms and Conditions of Sale for the legal terms that apply in relation to our sale of the products or contact us for more information.